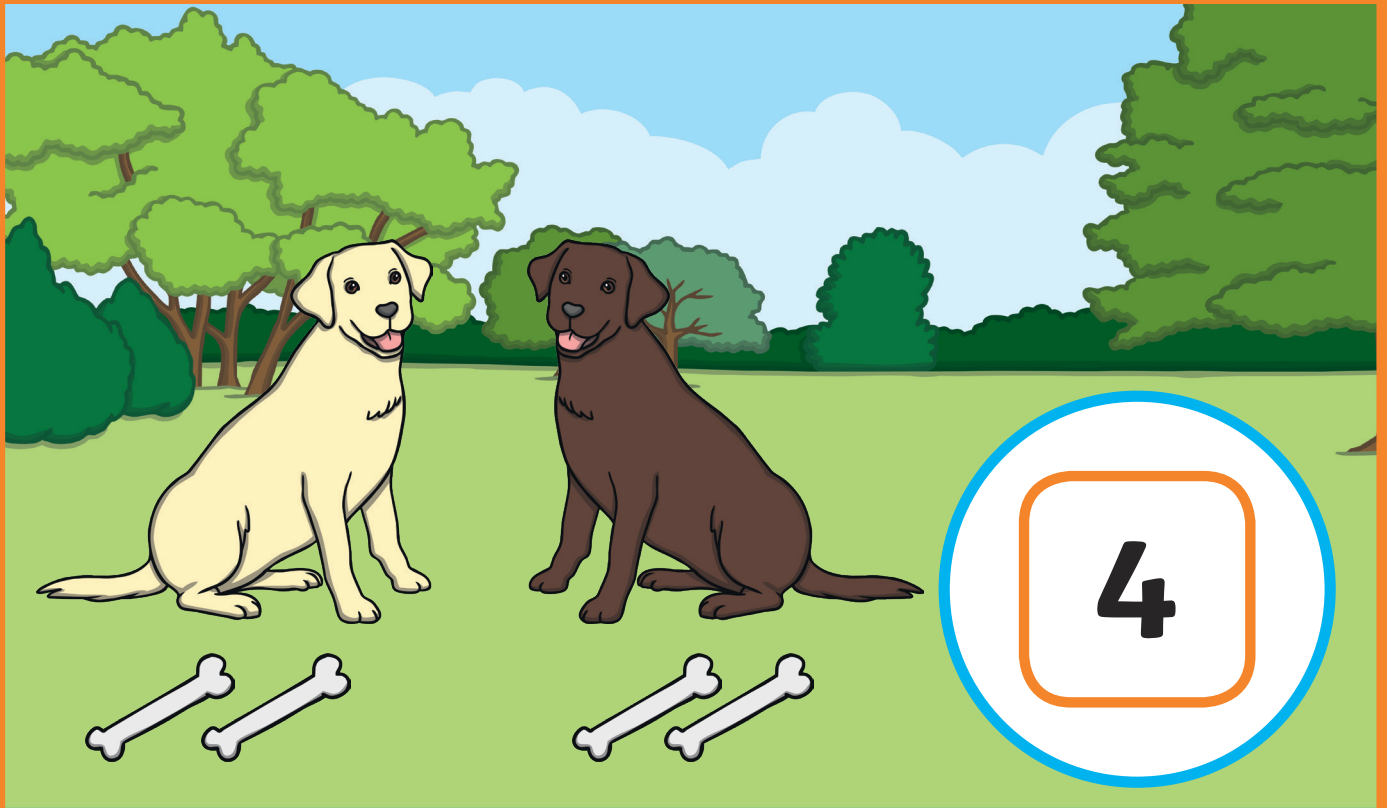


They solve problems, including halving.



- Pick a card.
- Take that number of bones.
- Give both dogs half the bones.

twinkl.com

Challenge Set-Up Instructions

1. Print two of the dog cards and cut out the mouths.
2. Stand the cards by attaching them to a box or block.
3. Place them side by side.
4. Print and cut the number cards showing even numbers to ten.
5. Print and cut ten bones.